



The Jensen Exterior Unit

PRICE	BEDROOMS	BATHROOMS	HEATED SQ FT
Starting in the high \$400,000s	3	2 1/2	1,818 (includes below ground floor)
CAR GARAGES	READY TO BUILD		
2 Car Garages	Springs of North Asheville		

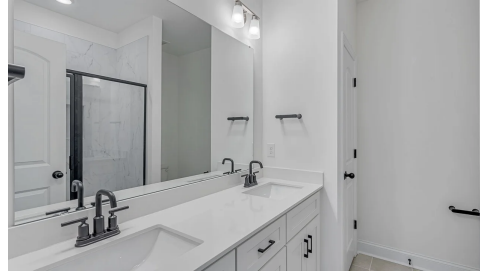


Home Highlights



EXTERIOR HIGHLIGHTS

- 2 Car Garage
- 3 Levels
- Low Maintenance Exterior



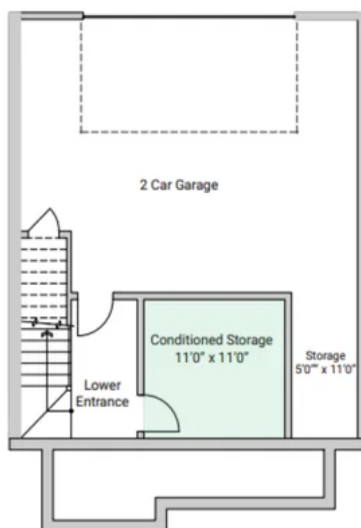
INTERIOR HIGHLIGHTS

- Open Floor Plan
- Kitchen Island with Eat In Area
- Stainless Appliances
- Large Owner's Suite with Walk In Closet
- Jack and Jill Bathroom for Secondary Bedrooms
- Plenty of Storage

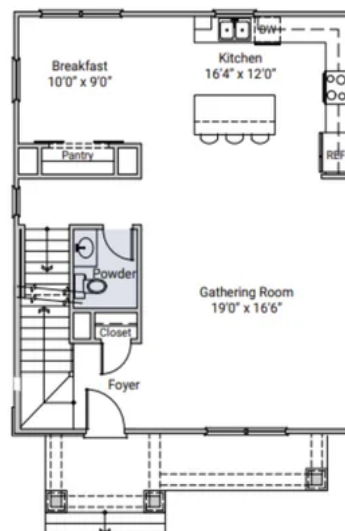


Floor Plans

The Jensen II 1800 Plan - Garage Level



The Jensen II 1800 Plan - Second Level

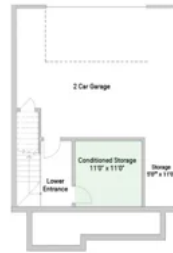




The Jensen II 1800 Plan - Third Level



The Jensen II 1800 Plan



4.12.24

Gallery Images

