



The Addison Exterior Unit

PRICE	BEDROOMS	BATHROOMS	HEATED SQ FT
Starting at \$475,000	4	3 1/2	1,959
CAR GARAGES		READY TO BUILD	
2 Car Garages		Spring of North Asheville	



Home Highlights



EXTERIOR HIGHLIGHTS

- Covered Porch (some models)
 - Stone or Brick Accents
 - 2 Car Garage



INTERIOR HIGHLIGHTS

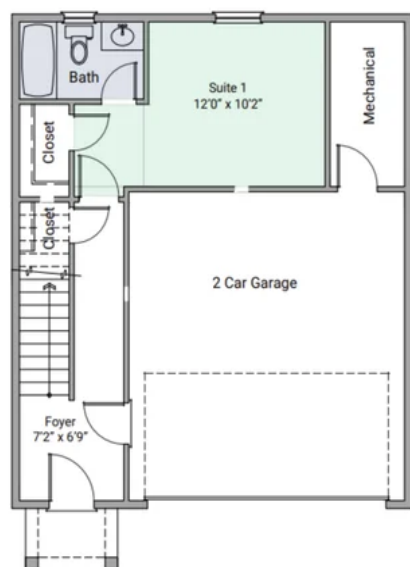
- Open Floor Plan including Dining Area
 - 3 Levels with Flexible Space
 - Large Kitchen Island with Eating Area
- Separate Lower Level Bedroom with Full Bathroom
 - Laundry Room Located with All Main Bedrooms



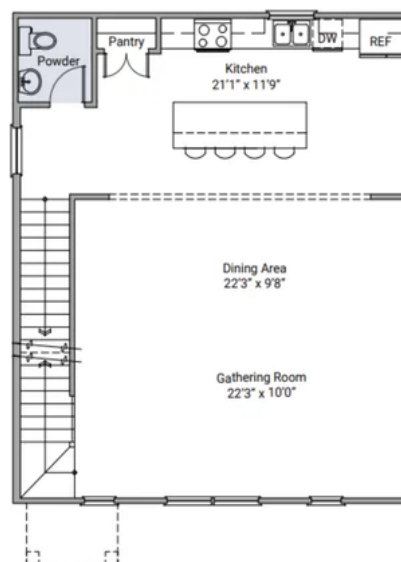


Floor Plans

The Addison 2000 Plan - Garage Level

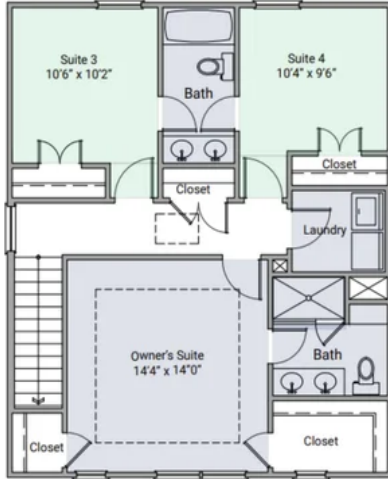


The Addison 2000 Plan - Second Level

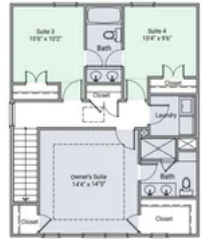
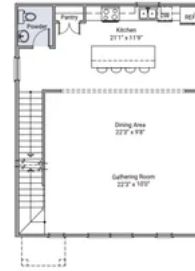
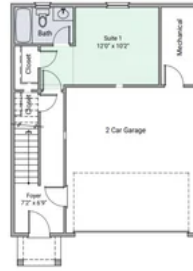




The Addison 2000 Plan - Third Level



The Addison 2000 Plan



MS
4.12.24

Gallery Images

