

Interior Highlights

- Level 3 Granite or Quartz Counter Tops In Kitchen and Bathroom Vanities
 - Stainless Bosch Appliances
- Site Finished Oak Floors in Foyer, Family Room, Kitchen Area
- Walk In Master Shower, Fully Tiled
- Tiled Master Bath Floor
- Tiled Secondary Bath Floors
- Tile Kitchen Backsplash



Exterior Highlights

- Full depth front porch
- Architectural Shingles
- Siding Is Cementitious Siding Including Hardie Shake and Board and Batten Details
- Two Car Garage

Brantley 3 Lot 4

The Brantley 3 is “Craftsman” Home With Full Front Porch With 4 Bedrooms on the Main Level plus

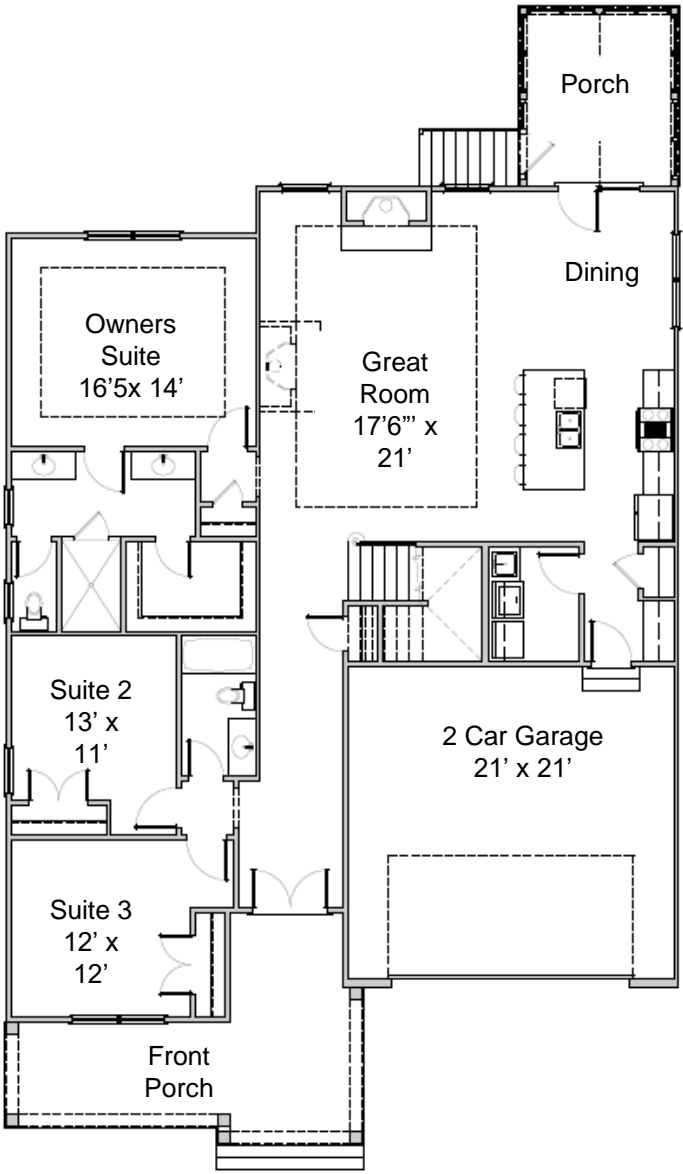
Bonus Room.

4 Bedrooms, 3 Baths. Bonus Room

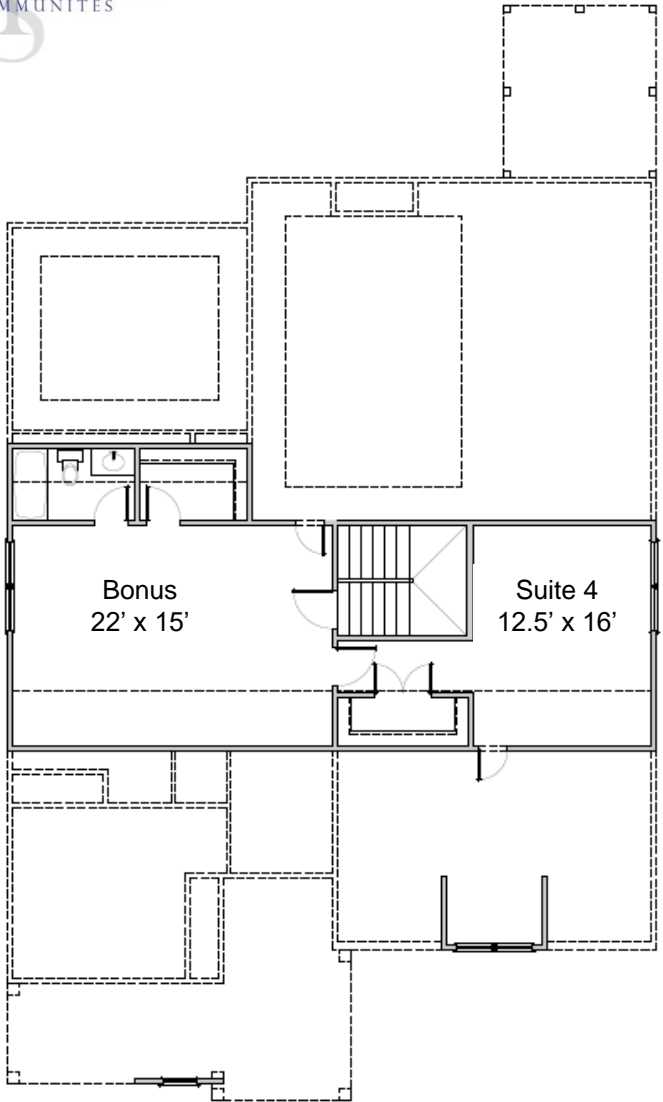


704-616-0872

*Features and Specifications and Prices Subject to Change Without Notice



First Floor



Second Floor

Bonus/ Suite
 4
 22' x 15'5"

madison-simmons
HOMES & COMMUNITIES

 **eagle
park**



**EAGLE PARK
MASTER SITE PLAN**